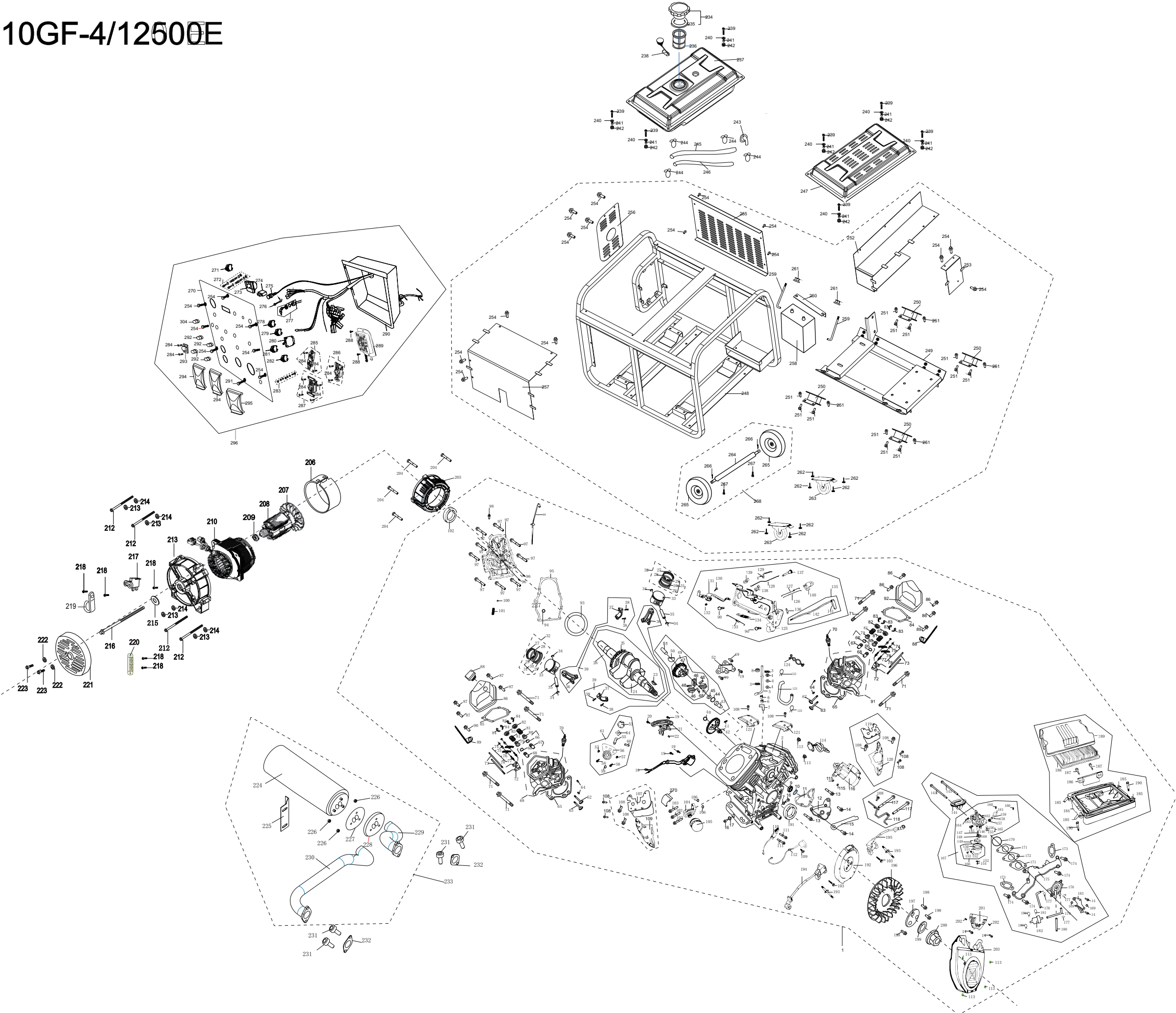


10GF-4/12500E



10GF-4 PART LIST

No. 1	Serial No.	Description	QUANTITY
1	2V78F-2	GENERAL GASOLINE ENGINE	1
2	11110	Crankcase	1
3	26112/168F	Split pin	2
4	26113	Washer	3
5	26111	Regulating sway bar	1
6	GB/T12764	Roller bearing	2
7	19140	Nipple, exhaust	1
8	11130	Oil seal, regulating sway bar	1
9	GB/T279	Bearing 6003	1
10	15253	Valve piece	1
11	12217	Gasket, labyrinth gland	1
12	12213	Gland, labyrinth	1
13	GB/T16674. 1	Bolt M6×30	2
14	GB/T16674. 1	Bolt M6×16	2
15	24145	Pressing line plate	1
16	11115	Drain plug	2
17	11116	Wahser, drain plug	2
18	27400/173F	Oil sensor	1
19	GB/T16674. 1	Bolt M6×16	1
20	GB/T16674. 1	Bolt M6×20	2
21	14500	Rocker arm Assy, lower	1
22	11113/173F	Set pin $\phi 8 \times 12$	1
23	13117/173F	Wood ruff key	1
24	13111	Crankshaft	1
25	13113	Timing driving gear	1
26	13110	Crankshaft assy	1
27	13411	Piston ring I	2
28	13412	Piston ring II	2
29	13422	Side rail	4
30	13421	Expander	2
31	13420	Scraper ring set	2
32	13400	Piston ring set	2
33	13311	Piston	2
34	13313/173F	Piston pin circlip	4
35	13312	Piston pin	2

10GF-4 PART LIST

No. 1	Serial No.	Description	QUANTITY
36	13121	Connecting rod	2
37	13122	Connecting rod cover	2
38	13123/173F	Bolt	4
39	13100	Connecting rod assy	2
40	14114	Adjusting washer	1
41	14122/173F	Extension spring	1
42	14100	Camshaft assy	1
43	25112	Sliding sleeve	1
44	25113/168F	Washer	1
45	25117/173F	Snap ring	1
46	25114	Flying block	3
47	25111	Driven gear, regulator	1
48	25116	Pin	3
49	25110	Driven gear, regulator assy	1
50	25118/173F	Washer, driven gear	1
51	25115	Regulating shaft	1
52	15250	Gauze set	1
53	15114	Rotor, outer, oil pump	1
54	15113	Rotor, inner, oil pump	1
55	15115	Shaft, oil pump	1
56	15112	Cover, oil pump	1
57	15117	Set pin, oil pump	2
58	GB/T70.1	Screw M6×16	2
59	15122	Insertter, driven gear	1
60	15111	Pin in the oil pump rotor drive	1
61	15100	Oil pump Assy	1
62	14411/182F	Intake valve	2
63	14421/182F	Exhaust valve	2
64	12117	Set pin	2
65	12121	Gasket, cylinder head	1
66	12116/173F	Circip	2
67	12214/173F	Intake valve guide	1
68	12215/173F	Exhaust valve guide	1
69	12130	Cylinder head Assy I	1
70	27100/173F	Spark plug F6TC	1

10GF-4 PART LIST

No. 1	Serial No.	Description	QUANTITY
71	12118/173F	Bolt	8
72	14221/173F	Pusher guide	2
73	14210	Pusher	4
74	14314/173F	Lock nut	4
75	14312/173F	Sleeve	4
76	14311/173F	Valve rocker	4
77	14313/173F	Adjusting bolt for valve gap	4
78	14310 /173F	Valve rocker assy	2
79	14417/173F	Spring retainer, exhaust valve	2
80	14420	Oil baffle cover components	
81	14414/173F	Valve spring	4
82	14414/173F	Spring seat, exhaust valve	2
83	14415 /173F	Spring seat, intake valve	2
84	14418	lock, air vavle	
85	12212/173F	Gasket, cylinder head cover	1
86	12132	Cylinder head cover Assy I	1
87	12221/173F	Bolt	1
88	15610	Oil plug	
89	24146	Support	1
90	GB/T16674. 1	Bolt M8×16	1
91	12141	Cylinder head II	1
92	12142	Cylinder head cover Assy II	1
93	13115	Adjusting washer	1
94	15248	O-ring $\phi 13 \times 2.5$	4
95	11114	Gasket, crankcase	1
96	11113	Set pin	2
97	GB/T16674	Bolt M8×50	9
98	11138	Plug	1
99	15510	Dipstick with seal	1
100	GB/T308	Ball S $\phi 9.5$	1
101	15118	Spring	1
102	11120	Oil seal, crankshaft	1
103	GB/T16674. 1	Bolt M6×25	3
104	15211	Seat ,oil cleaner	1
105	15200	Oil filter Assy	1

10GF-4 PART LIST

No.1	Serial No.	Description	QUANTITY
106	15248	O-ring $\phi 12 \times 2.5$	2
107	19131	Lead wind cover II	1
108	19315	Slide plate, crankcase II	1
109	GB/T16674.1	Bolt M6 \times 12	8
110	24130	Charge coil	1
111	GB/T5789	Bolt M6 \times 32	2
112	34400	Flameout diode	1
113	GB/T6170	Nut M6	1
114	27500	Diode	2
115	24143	Dowel pin, Motor, starting	2
116	24100	Motor, starting	1
117	24144	Bolt M8 \times 110	2
118	24140	jecting member set, starting m	1
119	19121	Lead wind cover I	1
120	19311	Slide plate, crankcase I	1
121	19171	Deflector	2
122	19144	Clamp, exhaust pipe	2
123	19143	Pipe, exhaust	1
124	19144	Clamp set, exhaust pipe	1
125	26210	Regulating board	1
126	26115	Pulling rod	1
127	26117	Back spring	1
128	26121	Choke link II	1
129	26119	Choke link I	1
130	26116	Lock bolt	1
131	26114	Regulating arm	1
132	GB/T6177.1	Nut M6	1
133	26215	Regulating spring	1
134	26118	Fine regulating spring	1
135	26260	Hand shank components	1
136	26112/168F	Clamp, regulating sway bar	1
137	16114	Switch, choke	1
138	26123	Clamp, Choke link II	1
139	26122	Clamp, Choke link I	1
140	26124	Clamp, pulling rod	1

10GF-4 PART LIST

No. 1	Serial No.	Description	QUANTITY
141	26261	Hand grip	1
142	26262	Support frame	1
143	16134	Bolt M6×120	2
144	17230	Bracket, air cleaner	1
145	16351	Idle adjustment screw	1
146	16240	Mixture chamber body	1
147	16244	Main nozzle	1
148	16243	Main jet	1
149	16220	Float	1
150	16216	Float chamber gasket	1
151	16211	Float chamber	1
152	16215	Washer	2
153	16214	Float chamber drain Screw	1
154	16212	Screw	1
155	16321	Choke	1
156	16322	Choke stem	1
157	16365	Airproof washer	1
158	16363	Throttle lever	1
159	16364	Washer	1
160	GB/T16674. 1	Screw M4	2
161	16362	Cover	1
162	16260	Throttle unit	1
163	16355	Spring, mixture adjustment screw	1
164	16354	Mixture adjustment screw	1
165	16320	Choke unit	1
166	16210	Float chamber	1
167	16100	Carburetor Assy	1
168	16230	Float needle	1
169	16712	Washer I	2
170	17212	gasket, inlet pipe	1
171	16113	Carburetor gasket	2
172	16122	Connecting block	1
173	17219	Inlet gasket	2
174	GB/T16674. 1	Bolt M8×50	4
175	17211	Inlet pipe	1

10GF-4 PART LIST

No.1	Serial No.	Description	QUANTITY
176	16700	Fuel pump Assy	1
177	16622	Clamp, pipe I	3
178	16714	Inlet pipe, fuel pump	1
179	16716	Vacuum pipe, fuel pump	1
180	16715	Outlet pipe, fuel pump	1
181	16624	Clamp, pipe II	3
182	16660	Fule strainer components	1
183	16711	Support , fule pump	1
184	17200	Air cleaner housing	1
185	17119	Clamp, air cleaner	4
186	17115	Coverplate air cleaner	1
187	GB/T16674. 1	Bolt M6×25	2
188	17120	Filter element	1
189	17112	Air cleaner cover	1
190	17117	Bolt, air cleaner	2
191	11120	Oil seal, crankshaft38×58×8	1
192	23300	Flywheel	1
193	19213	Stud	2
194	27210	Ignition coil assy I	1
195	27610	Ignition coil assy II	1
196	19111	Flywheel fan	1
197	19151	Pressing plate	1
198	GB/T16674	Bolt M8*16	3
199	23319	Washer, flywheel	1
200	23317	Nut M20×2	1
201	19221	Wind plate	1
202	GB/T5282	Screw st4. 2×19	2
203	19210	Fan hood assy	1
204	GB/T16674. 1	Bolt M10×32*1. 25	4
205	31158	Generator end cover	1
206	31113	Stator cover	1
207	31157	Generator fan	1
208	31120	Rotor comp.	1
209	GB276-94	Bearing 6204-2ZN	1
210	31110	Stator assembled	1

10GF-4 PART LIST

No. 1	Serial No.	Description	QUANTITY
211	31151	Generator stay	1
212	31112	Bolt M8×1.25×208	4
213	GB97.1	washer 8	4
214	GB93	Spring washer 8mm	4
215	31126	washer 10	1
216	31125	Bolt M10×1.25×290	1
217	31130/8.5GF-3	Brush Assy	1
218	31153	Bolt M5×12	5
219	31255	Wire clamp	2
220	31154	Connecting plate	1
221	31152	Generator end cover	1
222	31511	Washer φ5	2
223	31153	Bolt M5×22	2
224	18100	Muffler assy	1
225	32131	Install plate	1
226	GB/T6170	Nut M8	3
227	18217	Gasket	1
228	31159	connect disk	1
229	18117	Exhaust pipe	1
230	18117	Exhaust pipe	1
231	GB/T70.1	Hexagon socket screw	4
232	18215	Gasket, exhaust valve	2
233	18000	Muffler assy	1
234	16400	Fuel tank	1
235	16414	Packing ring	1
236	16610	Fuel filler	1
237	16510	Fuel tank	1
238	16560	Fuel sensor	1
239	GB5787-86	Bolt M6×16	8
240	GB/T96.1	Gasket 6	8
241	16914/C178F	Bush	8
242	19123/C178F	Gum cover	8
243	16640/173F-A	Fuel cock	1
244	16622	Tube clip	4
245	16621/173F	Outlet pipe I	1

10GF-4 PART LIST

No.1	Serial No.	Description	QUANTITY
246	16621/182F-E	Outlet pipe II	1
247	21132	Outlet pipe	1
248	32100	Frame	1
249	32230	Base support	1
250	32413	Cushion, frame	4
251	GB5787-86	Bolt M8×16	16
252	18230	Outer hood I	1
253	45834	Cover	1
254	GB5787-86	Bolt M6×12	13
255	32270	Said baffle plate	1
256	19117	Back baffle plate	1
257	18240	Outer hood II	1
258	32430	Battery	1
259	32431	Bolt M6×225	2
260	GB5787-86	Battery plate	1
261	GB/T6170	Nut M6	2
262	GB/T16674	Bolt M8×16	8
263	45420	Wheel kit	2
264	31310	Wheel axis	1
265	45420	Wheel kit	2
266	31352	Split pin 4.0×28	2
267	GB/T16674	Bolt M8×40	2
268	31300	Wheel kit Assy	2
269	11220	Buckler	1
270	31210	Control panel	1
271	31218	DC current protector	1
272	31231	Terminal	2
273	31226	Voltmeter	1
274	31214	Time display	1
275	26250	Check the breeze door pulls the	1
276	31265	Indicated lamp	1
277	31216	Ignition switch	1
278	31245	AC current protector	1
279	31245	AC current protector	1
280	31221	Circuit protector	1

10GF-4 PART LIST

No. 1	Serial No.	Description	QUANTITY
281	31245	AC current protector	1
282	31245	AC current protector	1
283	31222	Earth terminal set	1
284	GB5787-86	Screw M5×12	8
285	31223	Socket (20A)	1
286	31223	Socket (30A)	1
287	31223	Socket (50A)	1
288	GB5787-86	Screw M5×16	2
289	31140	Voltage regulator	1
290	31251	Control panel case	1
291	GB/T16674	Bolt M6×25	2
292	24126	Waterproof cap	5
293	32444	Waterproof cap	1
294	32444	Waterproof cap	1
295	32444	Waterproof cap	1
296	31200	Control panel Assy	1